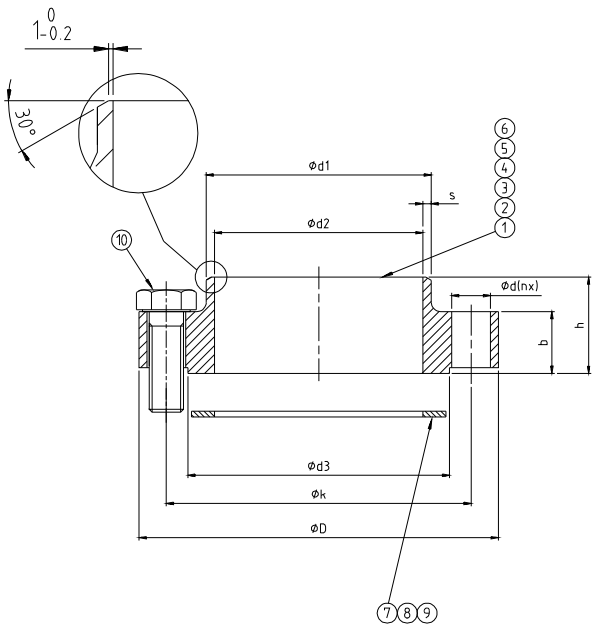


Only to the extent
 permitted by law,
 this document and its contents are the exclusive
 property of the manufacturer and may not be
 copied, reproduced, transmitted or
 communicated in any form or by any means
 without the prior written consent of the
 manufacturer.



Article No	Type	DN / PN	øD	øk	ød1	ød2	b	s	h	ød	n
34563251-01	FS	DN65 / PN40	125	106	76.1	70.3	21.5	2.9	33.5	13.5	8
34563251-02	FC	DN65 / PN40	125	106	76.1	70.3	21.5	2.9	33.5	13.5	8
34563251-03	FS	DN80 / PN40	141	118	88.9	82.5	21.5	3.2	33.5	13.5	8
34563251-04	FC	DN80 / PN40	141	118	88.9	82.5	21.5	3.2	33.5	13.5	8
34563251-05	FS	DN100 / PN35	165	144	114.3	107.1	21.5	3.6	33.5	13.5	12
34563251-06	FC	DN100 / PN35	165	144	114.3	107.1	21.5	3.6	33.5	13.5	12

Type FS= Flange of Stainless steel	
Desing Temp. min / max:	-196 / 400°C -321 / 752°F

Type FC= Flange of Carbon steel	
Desing Temp. min / max:	-10 / 225°C +14 / 435°F

Gasket	
Desing Temp. min / max:	-196 / 180°C -321 / 356°F

Bolt	
Desing Temp. min / max:	-196 / 400°C -321 / 752°F

SÄRSKILDA KRAV SPEC REQUIREMENTS

Kantlar brukas Grader avlägsnade Våjämhet Ra

Edges broken Burrs removed Surface roughn in Ra

Toleranser där ej annat anges: Auser späningsbearbetning. Klippa eller slatsade ytor: Toleranser where not stated. Chip cutting, shearing or punching.

Basic size	Tol
(1)	± 0.2
(6)	± 0.5
(30)	± 0.8
(120)	± 1.2
(135)	± 2
(1000)	± 3
(2000)	± 4

12	12	8	8	8	8	10	Article No	Name/Designation	Material (final condition)/Blank	Note
1	1					9	34562870-04	GASKET 132x107x15		
		1	1			8	34562870-03	GASKET 106x83x15		
				1	1	7	34562870-02	GASKET 92x70x15		
1						6	34562784-02	FLANGE DN100 PN35	Carbon steel	Type FC
	1					5	34562784-01	FLANGE DN100 PN35	Stainless steel	Type FS
		1				4	34562783-02	FLANGE DN80 PN40	Carbon steel	Type FC
			1			3	34562783-01	FLANGE DN80 PN40	Stainless steel	Type FS
				1		2	34562782-02	FLANGE DN65 PN40	Carbon steel	Type FC
					1	1	34562782-01	FLANGE DN65 PN40	Stainless steel	Type FS

Qty Item 34563251-06 34563251-05 34563251-04 34563251-03 34563251-02 34563251-01	Article No PC CHE Date 081022 Drawn BMC Approved LC 081114	Name/Designation KIT COMPACT COUNTER FLANGE PED BHE / FHE	Material (final condition)/Blank Material (final condition)/Blank	Note Note
	Design NOTIFICATION Project No.: Change Level: Text:	Scale 1:1 First angle projection ISO method	Drawing No. 34563251	Rev No. 0